

# cardiolife

Defibrillators TEC-5600 series

Improving quality  
of resuscitation



*Fighting Disease with Electronics*

 **NIHON KOHDEN**



Transitioning back to Life





# Saving Life

## Shock Efficiency on Demand

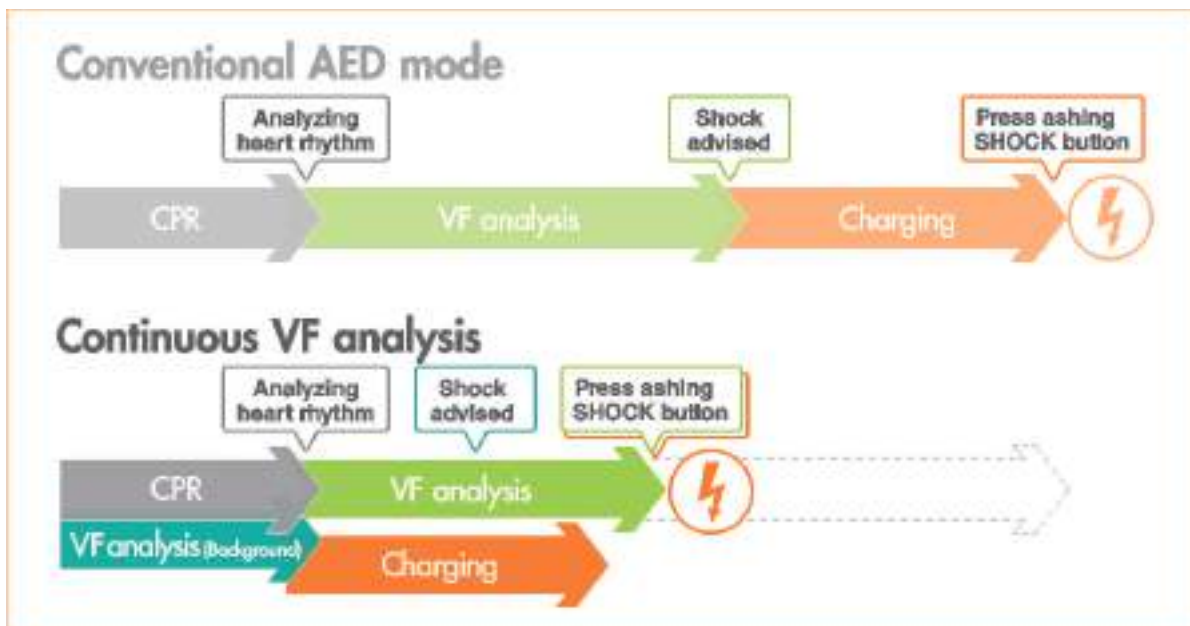
### Fast shocks and continuous observation

**Less than 4 seconds:** It takes less than 4 seconds to charge 200 J with either AC power or a fully charged new battery. Faster charging time helps you deliver energy quickly when VF is observed.

**3 seconds:** ECG baseline recovers within 3 seconds after defibrillation. The defibrillation result and patient condition can be monitored quickly.

### Even in AED mode...

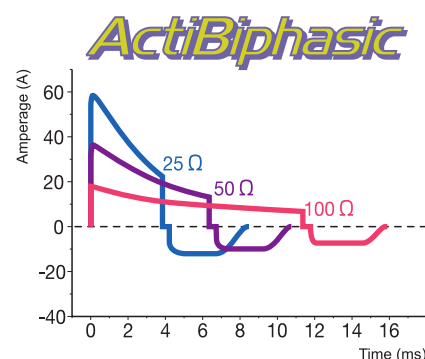
**Continuous VF analysis** is available on TEC-5600 series. With this function, the ECG waveform can be analyzed even during CPR and energy charging starts before the shock is advised. This helps you deliver faster defibrillation than ever before.



### For more effective defibrillation...

**20 ms:** It is important for effective defibrillation to deliver all the necessary energy to patient within 20 ms.

Nihon Kohden's unique ActiBiphasic technology keeps the 2nd phase duration within 4 ms. This reduces total energy delivery duration close to 20 ms even in high impedance patients.



# Restoring Life

## Assure Effectiveness of Resuscitation

### Ensure advanced airway management and high quality CPR

Nihon Kohden's cap-ONE is the world's smallest and lightest mainstream CO<sub>2</sub> sensor. It is suitable for emergency sites because of the simple heater-less design. This CO<sub>2</sub> sensor has a fast response which is helpful to confirm tracheal tube position, ensure quality of CPR and be an early indicator for ROSC during CPR as recommended by international guidelines.

**cap-ONE**

Early indicator  
for ROSC  
during CPR

Confirm  
tracheal tube  
position



Ensure  
quality of  
CPR

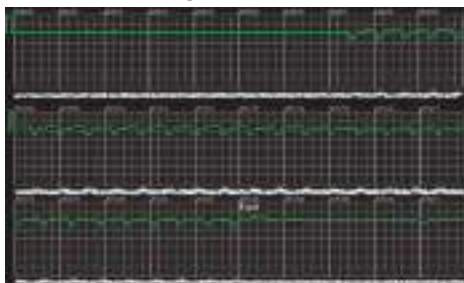


Audible Cue provides the caregiver with instant feedback about ETCO<sub>2</sub> level changes by delivering 5 different, easily recognizable sounds to indicate 5 ranges from high to low ETCO<sub>2</sub>.

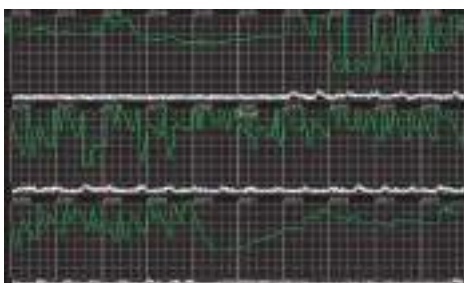
### Minimize pause during CPR

Nihon Kohden's pads, P-700 series are less affected by baseline drift during CPR compared to conventional pads. They minimize the CPR pause period as ECG waveforms can be seen even under chest compressions.

#### P-700 series pads



#### Conventional pads



Proper depth of chest compressions during CPR creates adequate blood flow and oxygen delivery to the heart and brain. Moreover, proper rate of chest compressions during CPR is an important determinant of return of spontaneous circulation (ROSC) and survival with good neurologic function.

**CPR assist**



Communicating with optional CPR-1100 CPR assist by Bluetooth® connection



# Sustaining Life

## Post Cardiac Arrest Management

### You won't miss arrhythmia...

Nihon Kohden's ec1 arrhythmia analysis algorithm can drastically reduce false alarms. You won't miss arrhythmia by using TEC-5600 series with high reliability arrhythmia alarms.



Arrhythmia detection is indicated by the alarm indicator, alarm sound and alarm message on the screen.

### Decision support of post cardiac arrest

The ECG of before and after defibrillation can be reviewed on a PC with optional viewer software. The data help the doctor determine the treatment for a patient who is brought to the hospital after collapsing outside the hospital.



### Enhanced patient comfort

Nihon Kohden's innovative NIBP technology, iNIBP, can provide patient's comfort and rapid measurement.





# Every Mom

## Always be ready

The status indicator informs you of daily and monthly self-test results. This helps keep your defibrillator always working and ready for its critical role in resuscitation.

The most critical component, the high voltage capacitor, has a unique high reliability design. The high voltage capacitor is divided into thousands of individual cells to prevent sudden, total failure of the capacitor. Even if any part fails, the remaining cells can still provide shock.



## Intuitive operation

The control dial provides intuitive operation for energy selection and mode selection such as AED, MONITOR, SETUP, BASIC CHECK and PACING modes.



An onscreen operation guide makes TEC-5600 series defibrillators extremely easy to use. Illustrations provide more information than simple alarm messages. For example, a “CONNECTOR OFF” technical alarm message advises how to resolve the problem.

The guide also shows the recommended measurement method for each parameter.



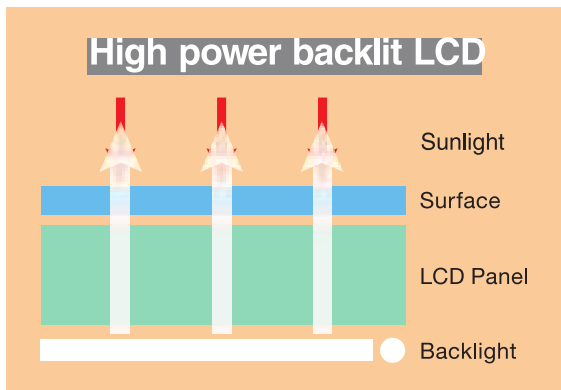


# ent Counts

## Always visible

The emergency environment is not always favorable to defibrillators. Outside the ambulance, the daylight can interfere with LCD screen visibility.

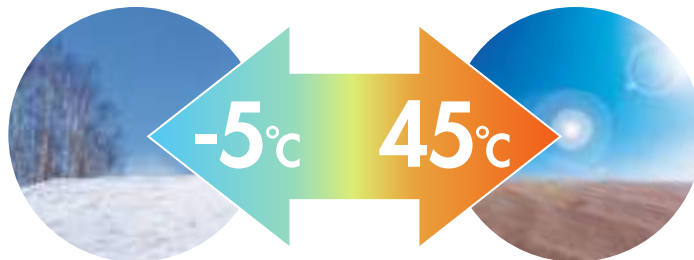
With a high power backlit LCD, TEC-5600 series provide clear visibility even under strong sunlight.



Conventional display: 450 cd/m<sup>2</sup>, TEC-5600 display: 1000 cd/m<sup>2</sup>

## Wide range of operation environments

### ● Operating temperature



### ● High waterproof property and high dust resistance based on IP44

\*TEC-5621 and TEC-5631 with a pad adapter, TEC-5611

Applicable when connecting all patient cables



### ● Vibration:

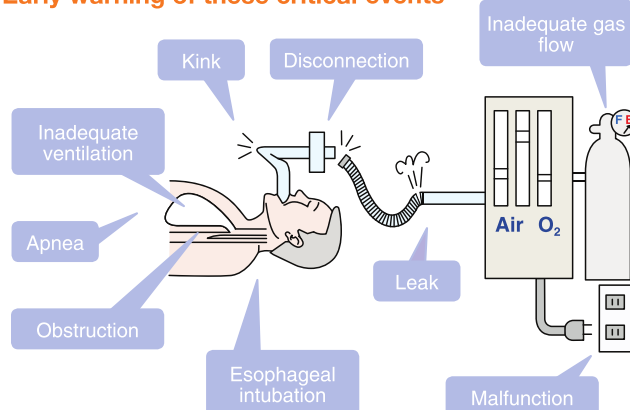
- MIL-STD-810F 514.5 Category 4 (Truck Restrained Cargo)
- MIL-STD-810F 514.5 Category 9 (Helicopter)

## For safer patient care

### ETCO<sub>2</sub> measuring for safer monitoring

- Most effective parameter to prevent respiratory incidents
- Early detection of trouble in breathing or ventilator

#### Early warning of these critical events



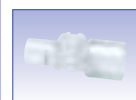
### Mainstream ETCO<sub>2</sub> Sensor

- Fast response with no lag time
- No warm - up time
- Compact and lightweight
- No heater or motor
- No sampling tube
- Durable and easy to use

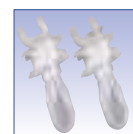
#### For both non-intubated and intubated patients



CO<sub>2</sub> sensor kit



Airway adapter  
R804



Oral/nasal adapter  
V922,  
V923, with oxygen  
cannula adapter

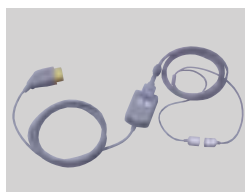
## Major options



Cart, KD-561V



CO<sub>2</sub> sensor kit,  
TG-980P [P910A]



CO<sub>2</sub> sensor kit,  
TG-920P [P907]



SpO<sub>2</sub> connection cord,  
JL-900P [K931]



Multi parameter/SpO<sub>2</sub>  
unit, QI-564V



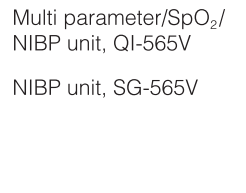
Disposable pads  
for adult/pediatric [H329]



Internal paddle electrode,  
ND-86x series



CPR assist, CPR-1100



Multi parameter/SpO<sub>2</sub>/  
NIBP unit, QI-565V

Battery pack, NKB-301V [X065]

Battery charger, SB-551V

Bluetooth module, QI-832V

SD card, [Y154F]

Defibrillation report viewer (ECG and voice), QP-551VK

Upgrade kit for arrhythmia analysis software, QS-831V

Bed rail hook, YZ-047H4

Gel holder kit, YZ-025H0

Wall mount, KG-561V

SD is a trademark of SD-3C, LLC.  
The Bluetooth word mark and logo are registered trademarks and are owned by the Bluetooth SIG, Inc.  
This brochure may be revised or replaced by Nihon Kohden at any time without notice.