

WELLSTIM

Feel the wellness Feel the wellness
wellness Feel the wellness
Feel the wellness Feel the wellness
wellness Feel the wellness
Feel the wellness Feel the wellness
wellness Feel the wellness
Feel the wellness Feel the wellness
wellness Feel the wellness
Feel the wellness Feel the wellness
wellness Feel the wellness
Feel the wellness Feel the wellness
wellness Feel the wellness

Feel
the
wellness



medtech

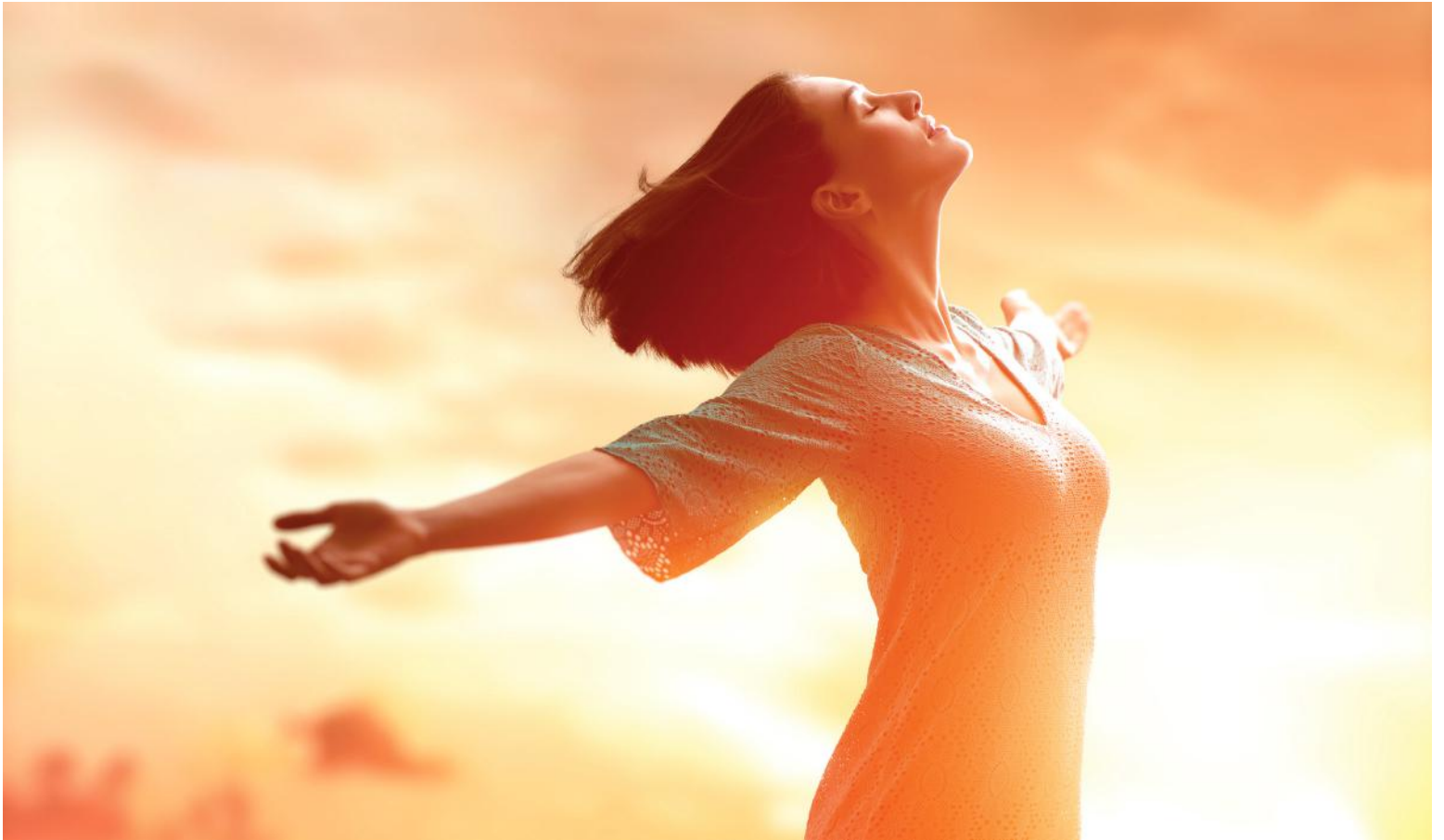
Stress and debilitating pain in people requires specialized medical care. This type of care is focused on providing relief from the symptoms and stress of a serious illness. The goal is to restore functionality and improve quality of life, for both the patient and the family.

Studies have repeatedly proved that chronic pain and stress share a symbiotic relationship.

Pain causes and escalates stress, which leads to more pain and more stress. It's a vicious cycle. The body's response to pain and stress triggers an increase in heart rate and blood pressure. The psychology of stress results in more pain and more stress. All of which brings about sleep deprivation, illness, and lack of well-being. Recent scientific reviews highlight the possible role of stress in pathogenesis of many auto-immune diseases. Stress causes disease and disease causes stress.



Feel
the
wellness



Psychosocial stress is an important precursor of disease and reduced Quality of Life.

Transient increases in systemic inflammation are observed in response to acute psychosocial stress. Chronic systemic inflammation often accompanies chronic psychosocial distress. These alterations of inflammatory activity play a key role in the pathophysiology of diseases that are adversely affected by chronic distress, such as cardiovascular disease, type2 diabetes, malignancy and metastasis.

That's why, the most recent and most advanced techniques in pain rehabilitation focus on alleviating stress to bring about greater efficacy in the treatment of chronic and acute pain including bone metastatis pain

Enter Johari Digital

Johari Digital, one of the pioneers in India in this space, has been working on developing and manufacturing pain and stress management medical devices for over four decades.

In keeping with this vision and mission, Johari Digital would like to introduce you to the latest and most advanced product designed to address pain and stress relief and deliver all-round wellness.

It's called Wellstim.

Wellstim, as the name suggests, is aimed at integrating therapies for pain and stress into one solution and deliver Wellness for life.

This integration of treatments will provide physicians flexibility to customise and deliver better outcomes.



What is Wellstim?

Wellstim is a complete pain and stress solution that operates on multiple levels.

It is a combination of electro-therapy, ultrasound and CES (cranial electrical stimulation) modalities that can treat multiple patients simultaneously.

It can provide four pole and two pole interferential treatments as well as a wide range of other electrical stimulation waveforms. Therapeutic voltage and current waveforms can be applied to a wide range of conditions in pain relief for acute and sub-acute traumatic and inflammatory conditions, edema, chronic rheumatoid, arthritic and bone metastasis pains.

Wellstim also includes a library of solutions for various pain and stress treatments. Its application increases local circulation, prevents and retards disuse atrophy, facilitates muscle re-education, enhances the range of motion, addresses scar tissues/ adhesions, and joint contracture/ adhesive capsulitis.





How it works:

CES calms the brain within minutes by bringing alert beta brain wave function down close to the alpha/theta ranges that bring about deep relaxation.

This unique technology creates deep relaxation without using narcotics or controlled substances, causes no side effects, and requires no recuperative time or supervision.



The CES device organically entrains brain waves to a frequency that promotes relaxation and calmness. This naturally creates homeostasis, neuromuscular release, and relaxation. Beta brain waves (13-30 cycles per second) are associated with day-to-day wakefulness – primarily cognitive, sensory, and motor activities. High beta brain waves (23-40 cycles per second) are associated with fear and anxiety.



Wellstim brings the patient's brain waves from beta or high beta to the alpha and theta ranges (4-12 cycles per second).



Alpha brain waves are considered the first stage of sleep and are typically associated with relaxation and peacefulness during deep meditation and bio feedback. Alpha brain waves are characterized by slower frequencies, higher amplitudes, and are more synchronous than beta brain waves. A person with brain waves in the alpha range is physically unable to be anxious. A few milliamps can improve mood and performance in Parkinson's & psychosis. In other words, calms the brain and makes it physically impossible to be stressed. This simple process alleviates chronic pain and all the fore mentioned maladies associated with stress and severe pain.

We have been working on developing and manufacturing pain and stress management medical devices for the last 20 years. We are setting trends for future technology of the world medical industry.

Johari Digital Healthcare Ltd. is one of the first FDA approved contract manufacturing companies of India. Our exceptional range of products related to life sciences and diagnostics have brought some of the most innovative concepts in medical devices to fruition. Wellstim is another step in this trailblazing direction.



Electrotherapy is the use of electrical energy to alleviate and eliminate pain.

It has been applied to a variety of treatments and includes the use of electrical signals such as TENS, IFT and Russian for pain management. The term has also been applied specifically to the use of electric currents to accelerate healing. Additionally, electrotherapy has also been used for a range of alternative medical devices and treatments. It is one of the pillars on which the science of Wellstim is built.

Electrotherapy	
Output Channels	2
Carrier Frequency	2,000 - 10,000 Hz
Beat Frequency	0 - 400 Hz
Max. Intensity	0 - 130 mA
Phase Duration	20 - 1000 μ S
Treatment Time	1 - 60 Minutes
Ultrasound	
Frequency	1 MHz & 3 MHz
Pulse Frequency	100 Hz
Intensity Pulsed	0 to 2.5 W/cm ²
Intensity Continuous	0 to 3 W/cm ²
CES	
Frequency	0.5 Hz
Output Volt	0.80 Vpp
Pulse Width	240 msec to 1 Second

TECHNICAL SEPCIFICATION	
WAVEFORMS	
	INTERFERENTIAL • Four Pole • Two Pole
	RUSSIAN • Continuous • Cycle Timed
	GALVANIC • Continuous • Medium Freq. Interrupted
	MONOPHASIC • Continuous • Cycle Timed • Rectangular Pulsed • Triangular Pulsed • Surged
	TENS • Asymmetrical Biphasic • Symmetrical Biphasic • Alternating Rectangular • Monophasic Rectangular
	DIADYNAMIC • MF • DF • CP • LP • CP-ISO • CP-ID • MF+CP • MF+CP-ID • DF+LP • DF+CP
	HIGH VOLTAGE PULSED CURRENT
	MICROCURRENT
	TRÄBERT
	SURGED • Rectangular • Triangular
	ULTRASOUND • 1 and 3 MHz • Head Contact Control • Pulsed Repetition Freq. • Electronic Signature
	S/D CURVE



APPLICATION IN HOSPITALS

WELLSTIM

COMPLIMENTS TREATMENT PROCEDURES WITH A HOLISTIC APPROACH TO ENHANCE FAST RECOVERY, MOBILITY AND ACHIEVE OPTIMAL HEALTH.

INTENSIVE CARE

Post trauma recovery
Reduce ICU induced stress

ONCOLOGY

Reduce pain and stress

GYNECOLOGY

Reducing Pain and Stress in Labor
Post Surgical Pain

DENTISTRY

Reduce Dental Pain
Temporomandibular Joint Pain (TMJ)

SPINE & NEURO

Movement disorders
Stress management
Cervical pain
Low back pain
Sciatica nerve pain
Reduce trigeminal neuralgic pain

ORTHOPEDIC

Post surgery rehabilitation
Musculoskeletal injury
Osteoarthritis pain
Fracture and traumatic pain
Shoulder Pain
Knee Pain
Low Back Pain

WELLSTIM

It's what we are, It's what we do

We pursue



zero side effects to body
zero effect to environment
zero defects in quality

Growing to promote wellness meditatively

JOHARI
medtech

www.joharidigital.com | info@joharidigital.com

AN ISO 13485, US FDA GMP AUDITED MEDICAL DEVICE MANUFACTURER

CORPORATE OFFICE : G-582-584, EPIP, Boranada, Jodhpur (Rajasthan), India | Tel : 1800 102 8684 | info@joharidigital.com

JOHARI DIGITAL HEALTHCARE LTD